



cedars

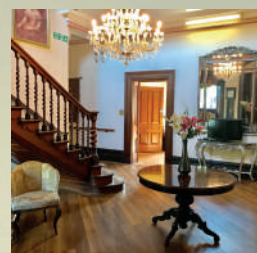
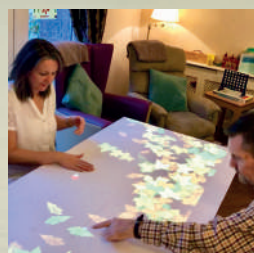
CARE GROUP

AN OPEN INVITATION...

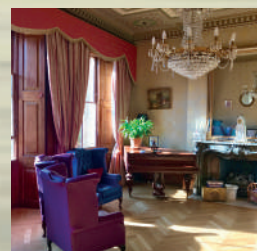
Wednesday 13th February | 3-7pm

Winscombe Hall Care Centre, Winscombe Hill
Winscombe, Somerset, BS25 1DH

We are delighted to extend an open invitation to our local communities, both business and residential, to join us for our open day event to celebrate the stunning, boutique refurbishment of The Halls.



Join us to find out about our ethos of providing individual choice and personal 'home from home' care for individuals with Residential Care; Respite Nursing; Specialised Care for Dementia and Alzheimer's, and, Palliative Care.



01934 843553 | winscombe@cedarscaregroup.co.uk
www.cedarscaregroup.co.uk



cedars

CARE GROUP



Welcome home to true care for elderly residents and seniors tackling Dementia, in Winscombe, Somerset.

Here at **Winscombe Hall Care Centre** we've combined a stimulating environment, conducive to improving quality of life, with a beautifully preserved property, which retains its rural character and former grandeur. **Winscombe Hall** has **39 bedrooms** boasting stylish décor and high standard furnishings. The property is split into **two main parts:**

At The Hall, we provide nursing and residential care. Our communal areas are where residents put their feet up in the company of others and/or join in social activities. These include family and dining rooms with high-ceilings and original features. Residents also have access to landscaped gardens and woodlands, in a natural setting of outstanding beauty.

At Stable Cottage, we offer a more specialist environment, designated for Dementia and Alzheimer's care. Its features include reminiscence settings, interactive technology and a secure courtyard. Dedicated staff are always on hand to guide activities and assist with individual needs.

We offer different types of care depending on the level of support required. These include Residential Care, Respite Nursing and Specialised Care for Dementia and Alzheimer's and palliative care. Each resident receives personalised support in accordance with his/her individual care plan, under the supervision of a dedicated home manager.

Our ethos is to provide individual personal choice, kindness and care.